



Fig 1. Édouard Manet, *Le Suicidé*, 1877-81, oil on canvas, 38 x 46 cm. Foundation E.G. Bührle Collection, Zurich.



Fig. 2. Édouard Manet, *The Tragic Actor*, 1865-66, oil on canvas, 187.2 x 108.1 cm. National Gallery of Art, Washington, D.C.



Fig. 3. Édouard Manet. *Portrait of Faure in the Role of Hamlet*, 1877, oil on canvas, 196 x 130 cm. Folkwang Museum. Essex.

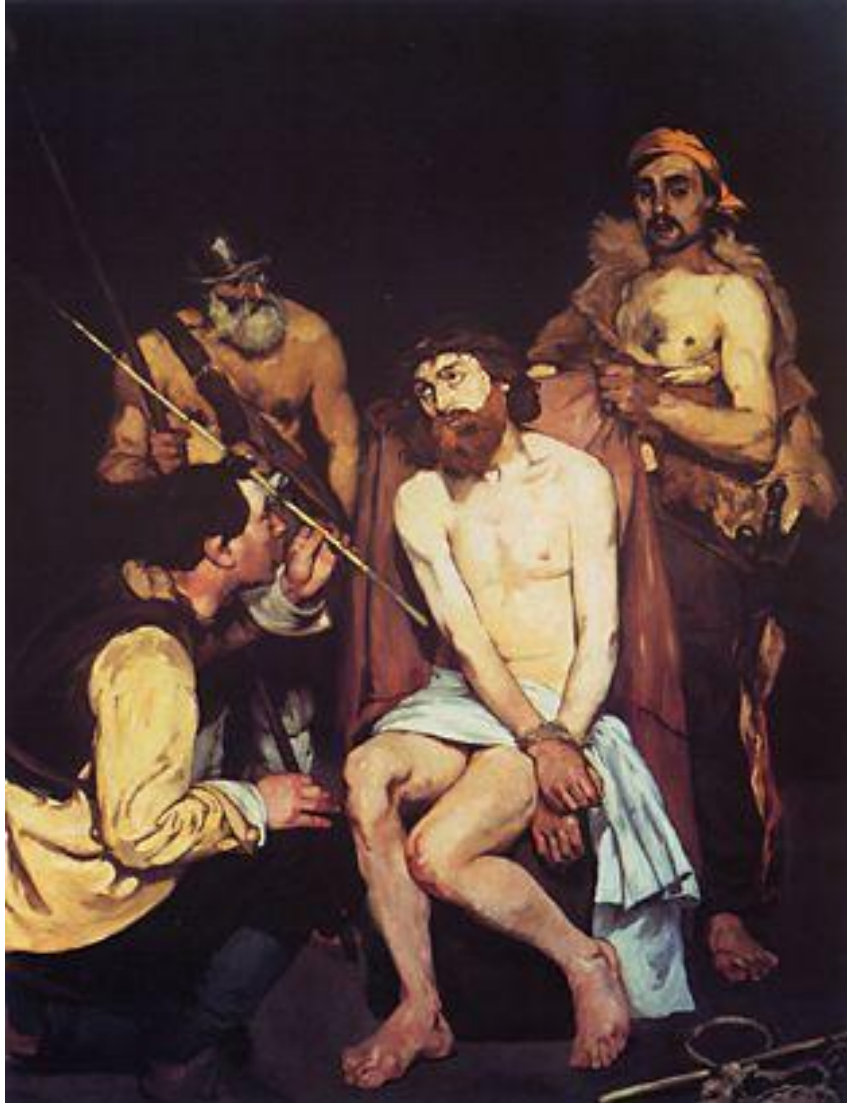


Fig. 4. Édouard Manet, *Jesus Mocked by Soldiers*, 1865, oil on canvas, 191 x 147 cm. Art Institute of Chicago.



Fig. 5. Édouard Manet, *Music in the Tuileries*, 1862, oil on canvas, 76 x 118 cm.
National Gallery, London

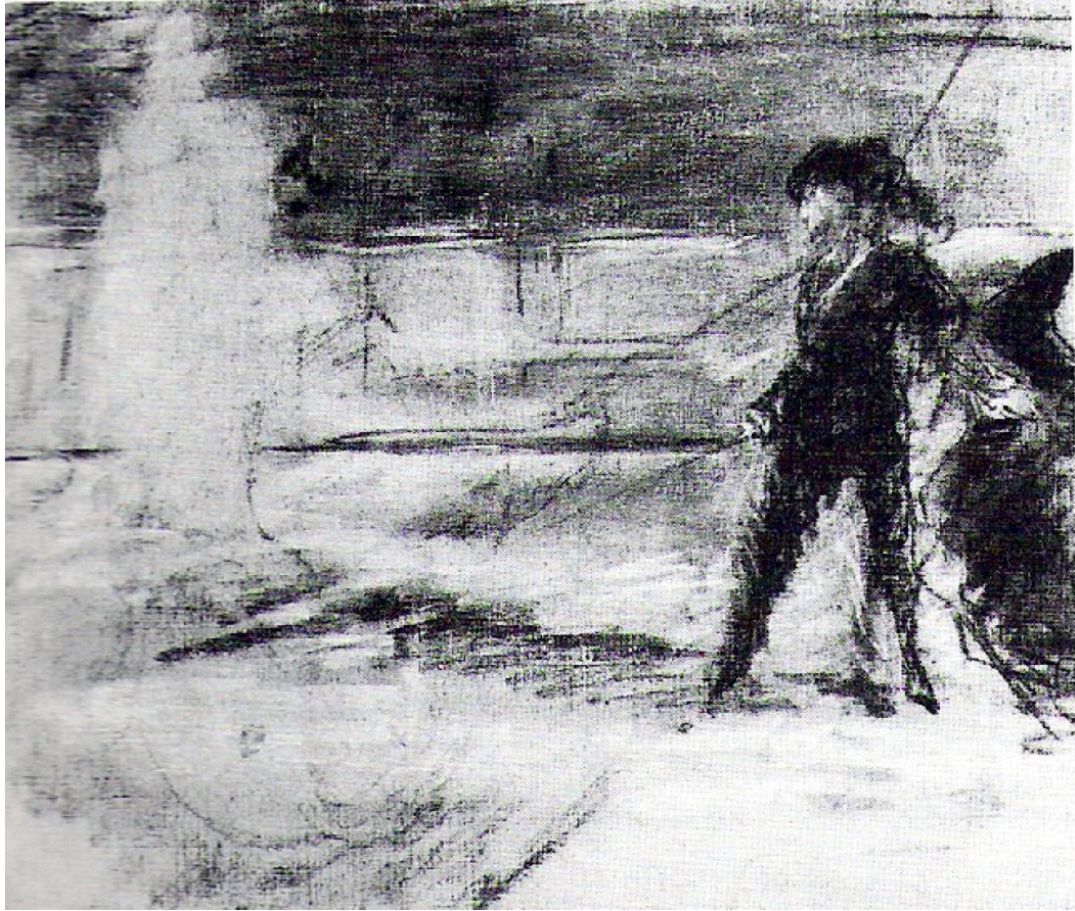


Fig. 6. Édouard Manet, *Hamlet Confronting the Ghost of His Father*, c. 1877, pastel, 46 x 56 cm. Burton Agnes Hall.



Fig. 7. Édouard Manet, *Le Suicidé* (detail), 1877-81, oil on canvas, 38 x 46 cm. Foundation E.G. Bührle Collection, Zurich.



Fig. 8. Édouard Manet, *Monk in Prayer*, ca. 1864-65, oil on canvas, 146.4 x 115 cm. Museum of Fine Arts, Boston.



Fig. 9. Édouard Manet, *In Prayer*, 1861, engraving. Department of Prints and Photography, Bibliothèque Nationale, Paris.



Fig 10. Francisco de Zurburán, *Saint Francis in Meditation*, 1635-40, oil on canvas, 152 x 99 cm. National Gallery, London.

